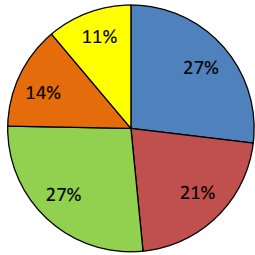


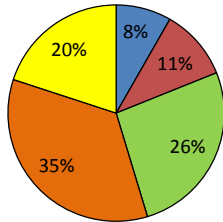
# 2010 Performance Measures Annual Report -- Bridges

Statewide

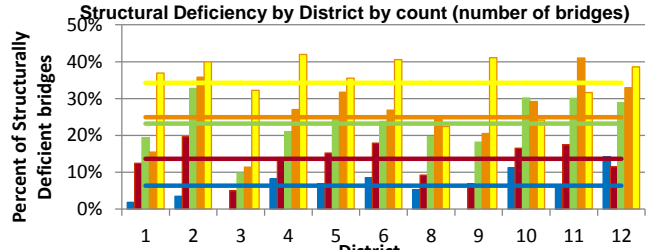
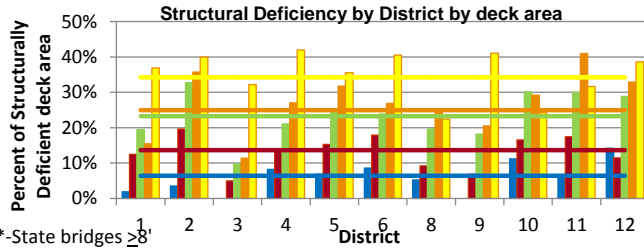
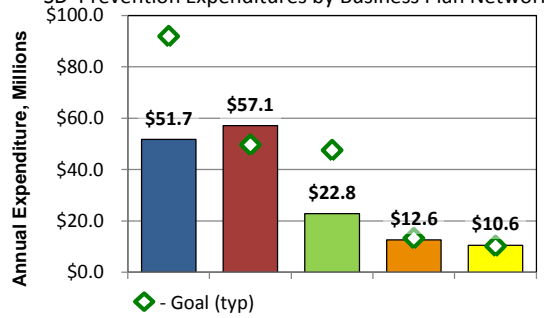
% Bridges by Business Plan Network (Deck Area)



% Bridges by Business Plan Network (Count)



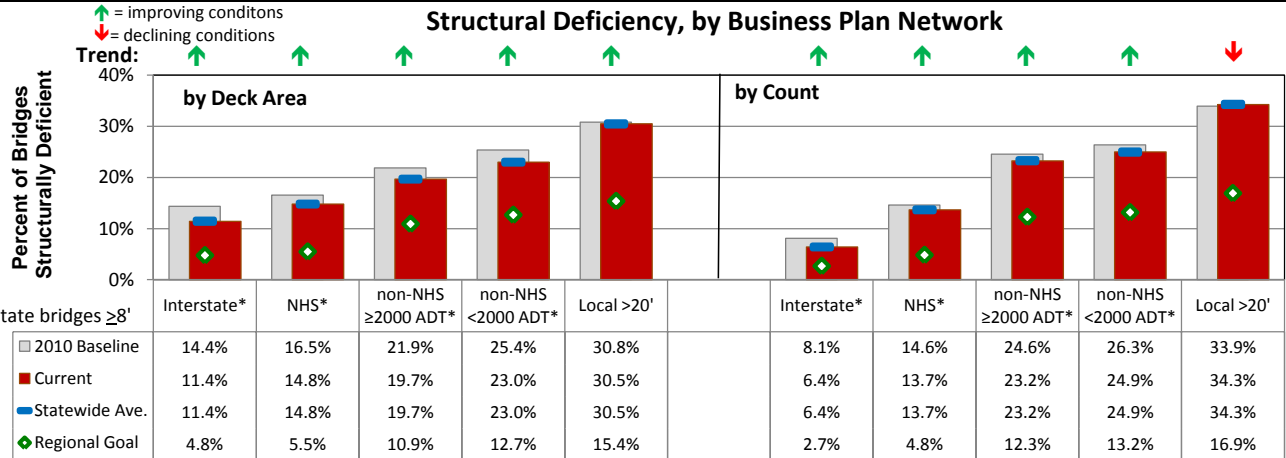
SD Prevention Expenditures by Business Plan Network



\*-State bridges ≥8'

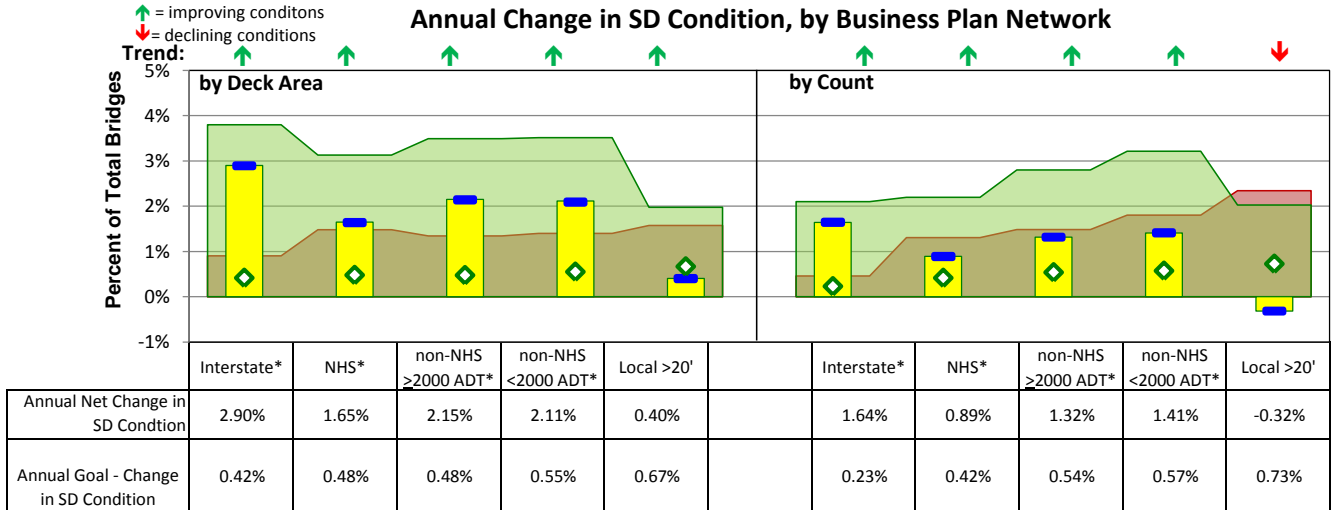
Legend for Structural Deficiency charts:  
 Interstate\* (blue), NHS\* (red), non-NHS >2000 ADT\* (green), non-NHS <2000 ADT\* (orange), Local >20' (yellow)  
 Interstate\* (State Ave.) (blue), NHS\* (State Ave.) (red), Non-NHS, >2000 ADT (State Ave.) (green), Non-NHS, <2000 ADT (State Ave.) (orange), Local >20' (State Ave.) (yellow)

## Structural Deficiency, by Business Plan Network



\*-State bridges ≥8'

## Annual Change in SD Condition, by Business Plan Network



\*-State bridges ≥8'

Legend for Annual Change in SD Condition chart:  
 % of Bridges becoming SD (red), % of Bridges SD fixed (green), Net Change in SD Condition (yellow), Net Change - Statewide (blue), Goal (Net Change in SD Condition) (diamond)

Bridge Data Date: 12/29/10

# 2010 Performance Measures Annual Report -- Bridges

Statewide

Current Status of Bridges in Region:

Network	Total Bridge Count	Total Deck Area (Msf)	Aver. Bridge DA (sf)	Closed Bridges	Posted Bridges	Struct. Deficient Count	% SD by Count	SD-Deck Area (Msf)	% SD by Deck Area	Non-SD Bridges with a "5" Condition Rating
State >8'; Interstate/Ramps	2,618	34.1200	13,033	1	0	168	6.42%	3.9018	11.44%	675
State >8'; NHS (non Interstate)	3,369	27.3109	8,107	0	4	460	13.65%	4.0368	14.78%	961
State >8'; non-NHS >2000 ADT*	8,355	34.0685	4,078	5	169	1,942	23.24%	6.6987	19.66%	2,584
State >8'; non-NHS <2000 ADT	10,983	17.2014	1,566	33	511	2,740	24.95%	3.9528	22.98%	3,318
<b>Total - State Bridges (&gt;=8')</b>	<b>25,325</b>	<b>112.7007</b>	<b>4,450</b>	<b>39</b>	<b>684</b>	<b>5,310</b>	<b>20.97%</b>	<b>18.5901</b>	<b>16.50%</b>	<b>7,538</b>
Local>20'	6,318	14.1325	2,237	195	1857	2,164	34.25%	4.3044	30.46%	1,640

## Annual Performance Measures - by SD Bridge Count

Goals:	% SD by Count			Reducing Rate of Deterioration			Annual Net SD Reduction		
Network	Long Range Goal SD Count (max.)	Target 2011 SD Count (max.)	Actual SD Count	Max. Annual New SD Count	Max. Annual New SD Count (State-wide Ave.)	Actual Annual New SD Count (SD "on")	Min. Net Annual SD Count Reduction	Min. Net Annual SD Count Reduction	Net Actual SD Count Reduction
State >8'; Interstate/Ramps	70	205	168	0	12	12	6	5	43
State >8'; NHS (non Interstate)	163	476	460	8	44	44	14	11	30
State >8'; non-NHS >2000 ADT*	1026	2006	1942	63	124	124	45	34	110
State >8'; non-NHS <2000 ADT	1447	2831	2740	110	198	198	63	47	155
<b>Total - State Bridges (&gt;=8')</b>	<b>2706</b>	<b>5518</b>	<b>5310</b>	<b>181</b>	<b>378</b>	<b>378</b>	<b>128</b>	<b>97</b>	<b>338</b>
Local>20'	1069	2092	2164	63	148	148	46	35	-20

## Annual Performance Measures - by SD Deck Area (DA)

Goals:	% SD by Deck Area			Reducing Rate of Deterioration			Annual Net SD Reduction		
Network	Long Range Goal % SD by DA (max.)	Target %2011 SD DA (max.)	Actual %SD DA	Max. Annual New % SD DA	Max. Annual New % SD DA	Actual Annual New SD DA (SD "on")	Min. Net Annual % SD DA Reduction	Min. Net Annual % SD DA Reduction	Net Actual % SD DA Reduction
State >8'; Interstate/Ramps	4.8%	13.9%	11.4%	0.00%	0.90%	0.90%	0.42%	0.31%	2.90%
State >8'; NHS (non Interstate)	5.5%	16.0%	14.8%	0.25%	1.47%	1.48%	0.48%	0.36%	1.65%
State >8'; non-NHS >2000 ADT*	10.9%	21.4%	19.7%	0.75%	1.34%	1.34%	0.48%	0.36%	2.15%
State >8'; non-NHS <2000 ADT	12.7%	24.8%	23.0%	1.00%	1.38%	1.40%	0.55%	0.41%	2.11%
<b>Total - State Bridges (&gt;=8')</b>	<b>8.0%</b>	<b>18.3%</b>	<b>16.5%</b>	<b>0.44%</b>	<b>1.24%</b>	<b>1.25%</b>	<b>0.47%</b>	<b>0.35%</b>	<b>2.25%</b>
Local>20'	15.4%	30.1%	30.5%	1.00%	1.58%	1.57%	0.67%	0.50%	0.40%

## Annual Performance Measures - SD Prevention

Goals:	SD Prevention - Expenditures			SD Prevention - Count			Legend
Network	Min. SD Prevention (million\$)	Min. SD Prevention (million\$)	Actual SD Prevention (million\$)	Min. SD Prevention (# bridges)	Min. SD Prevention (# bridges)	Actual SD Prevention (# bridges)	
State >8'; Interstate/Ramps	\$91.96	\$45.98	\$51.73	68	51	100	Target - Optimum Threshold
State >8'; NHS (non Interstate)	\$49.69	\$24.84	\$57.08	77	58	110	Target - Cautionary Threshold
State >8'; non-NHS >2000 ADT*	\$47.56	\$23.78	\$22.82	155	116	80	Actual - At Optimum Threshold
State >8'; non-NHS <2000 ADT	\$13.25	\$6.62	\$12.63	133	100	87	Actual - At Cautionary Threshold
<b>Total - State Bridges (&gt;=8')</b>	<b>\$202.45</b>	<b>\$101.23</b>	<b>\$144.26</b>	<b>433</b>	<b>325</b>	<b>377</b>	Actual - Not Meeting Cautionary Threshold
Local>20'	\$10.22	\$5.11	\$10.57	66	50	14	

Bridge Data Date: 12/29/10